



ROSSDALES

VETERINARY SURGEONS

# DENTISTRY AND HEAD SURGERY



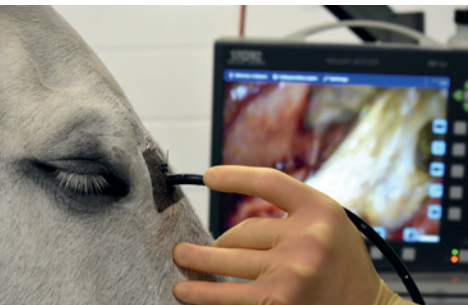
**RosSDales Equine Hospital is proud to provide the most comprehensive equine dentistry and head surgery service anywhere in the United Kingdom.**

Our unparalleled team of RCVS, European and American recognised specialists in dentistry, surgery, medicine and diagnostic imaging offers a fully-integrated approach to the investigation, diagnosis, treatment and care of cases referred by our own vets, and from practices across the UK.

## Advanced Dentistry and Dental Surgery

Led by Tim Barnett and Mark Grant, our dentistry team is able to offer a complete range of advanced dental procedures, both at our world-renowned equine hospital in Newmarket, and as visiting clinicians at referral clinics around the country. These services include:

- Oral and minimally-invasive surgical extractions
- Endodontic therapy
- Periodontal treatment
- Occlusal restorations
- Fracture management



## Head and Sinus Surgery

Our team of five specialist surgeons have many years' experience in all facets of head surgery. The majority of our procedures are carried out in our dedicated Standing Surgery Suite, using sedation and local anaesthesia. These services include:

- Minimally-invasive sinuscopy and conchotomy
- Sinus osteotomy
- Fracture fixation
- Nasal surgery
- Ocular and ophthalmic surgery

### 24 Hour Care, 365 Days a Year

Our hospital is staffed by a team of experienced veterinary surgeons and veterinary nurses 24 hours a day, every day of the year, providing our equine patients with around-the-clock monitoring and care.

## Diagnostic Imaging Service

Our diagnostic imaging department is internationally recognised in all areas of equine clinical practice, including dental and head imaging. Led by Vanessa Peter and Rachel Murray, our diagnostic imaging team has a wealth of experience in dental and head image acquisition and interpretation. We are proud to provide in-house and teleradiology services to a number of equine clinics and hospitals around the world.

Our hospital has a full range of imaging modalities available for patients with suspected dental conditions, sinus disease and head trauma including:

- Standing and GA Computed Tomography (CT)
- Scintigraphy
- Fixed, mobile and intra-operative radiography
- Intra-operative fluoroscopy



## Equine Internal Medicine

Our team of four specialists in equine internal medicine are always on hand to provide unrivalled expertise in headshaking cases, as well as with metabolic, endocrine, neurologic and ophthalmic conditions often associated with dental and sinus cases. We additionally offer a monthly clinic with ophthalmology specialist Claudia Hartley.

## State-of-the art Laboratory

Rossdales Laboratories is a world leader in the provision of clinical diagnostic services, with brand new laboratory facilities and state-of-the-art technology. With dedicated and experienced laboratory technicians, as well as expert analysis by specialist veterinary surgeons and pathologists, our team works closely with our hospital team to deliver rapid, reliable results.



## Our Team

### Dentistry



**Timothy P. Barnett**  
BSc(Hons) BVM&S  
MSc CertAVP DipECVS  
DipEVDC-Eq MRCVS



**Mark J. Grant** MA VetMB  
BSc PhD CertAVP(ED) BAEDT  
MRCVS

### Surgery



**Timothy P. Barnett**  
BSc(Hons) BVM&S  
MSc CertAVP DipECVS  
DipEVDC-Eq MRCVS



**Richard J. Payne** BSc  
BVSc CertES(Orth) DipECVS  
MRCVS



**Matthew Coleridge**  
BVMS MS Dip ACVS-LA  
MRCVS



**Andrew P. Bathe** MA  
VetMB DEO DipECVS  
DipACVSMR MRCVS



**Sarah J. Boys Smith** MA  
VetMB CertES(Orth) DipECVS  
DipACVSMR MRCVS

### Diagnostic Imaging



**Vanessa C. Peter** MedVet  
DipECVDI MRCVS



**Rachel Murray** MA VetMB  
MS PhD MRCVS Dip ACVS  
Assoc. ECVDI MRCVS

### Internal Medicine



**Celia M. Marr** BVMS MVM  
PhD DEIM DipECEIM FRCVS



**Emily F. Floyd** BVSc  
DipACVIM MRCVS



**Catriona J. Mackenzie**  
BVMS MSc CertAVP(EM)  
DipECEIM MRCVS



**Charlotte A. Easton-Jones**  
VetMB MA DipACVIM MRCVS

### Ophthalmology



**Claudia Hartley** BVSc  
CertVOphthal DipECVO  
FRCVS

## Refer a Case

Rossdales Equine Hospital offers the most complete and fully integrated service for equine patients with dental and head conditions. We are always happy to discuss a case prior to committing to a referral. To refer a case, or to speak to one of our team of specialists, please contact the hospital.

Tel: **01638 577754** (or **01638 663150** for out of hours emergencies, 24/7, 365 days a year)

Email: [hospital@rossdales.com](mailto:hospital@rossdales.com)

Rossdales Equine Hospital & Diagnostic Centre, Cotton End Road, Exning, Newmarket, Suffolk CB8 7NN